



✦  
✦ Welcome to  
2026-2027  
Open Enrollment

✦  
San Bernardino County and  
Teamsters Local 1932  
✦  
✦

# What we will cover today



[Learn about your plans](#)

[Web/mobile resources](#)

[Member perks](#)

[We're here for you](#)



 **DELTA DENTAL®**

Learn about  
your plans



 DELTA DENTAL®

DeltaCare® USA

# We've got you covered

A prepaid, fixed copayment plan

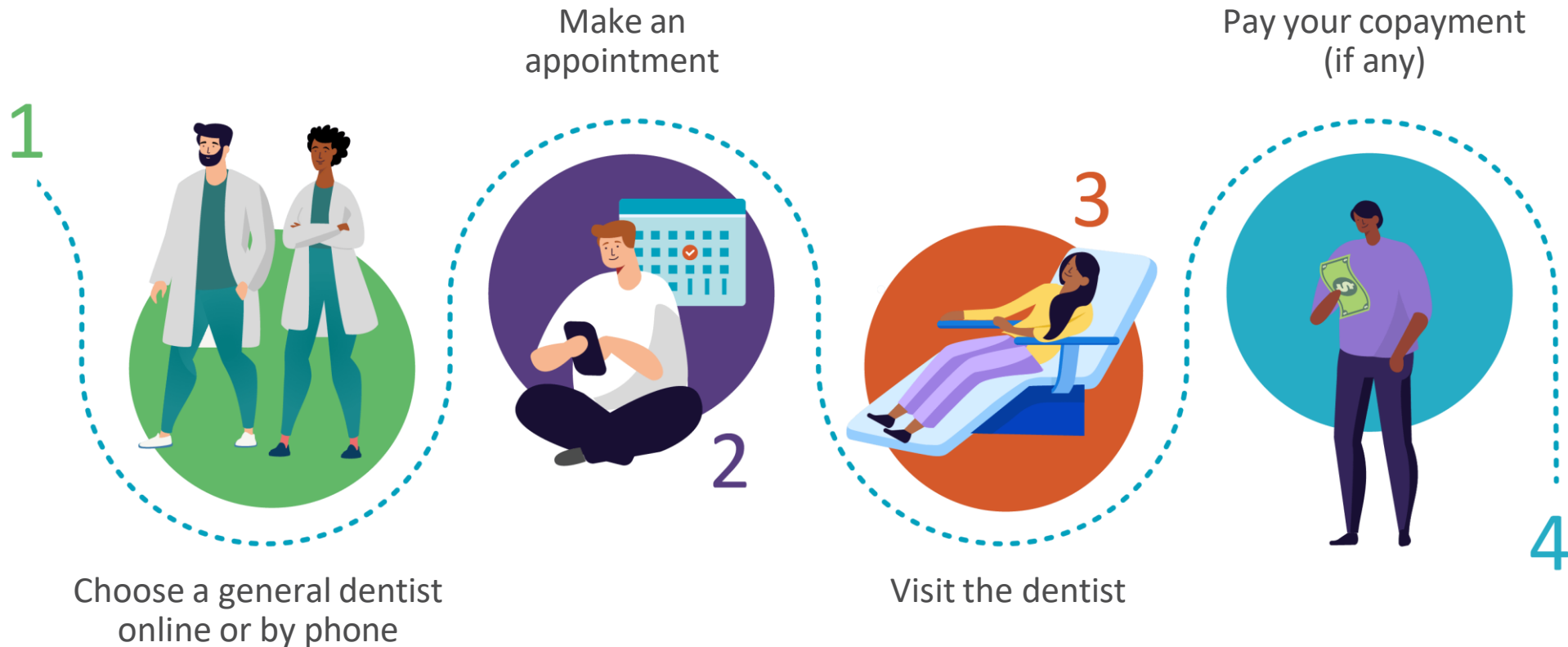


Once enrolled, select a general dentist from the DeltaCare USA network to access:

- Wide array of services covered for whatever dental care you need
- Low or no copayments on most preventive services
- “Always on” coverage (no maximum)
- Transparent out-of-pocket costs in your plan booklet or online account
- All inclusive copayments (no hidden material or lab fees), so you won't have any billing surprises

# How DeltaCare USA works

Getting dental care is easy



If you don't have an assigned dentist, you may simply visit any DeltaCare USA general dentist. After the dentist files a qualifying claim, you're added to that dentist's roster, and they become your assigned general dentist.

# Specialty and emergency care

## DeltaCare USA

- If you need specialty care, your general dentist will refer you to an in-network specialist
- Your plan includes out-of-network coverage only for emergency services required during non-business hours or if 35 miles or more from your assigned dental facility



# How to choose your dentist

DeltaCare USA



If you don't already have an assigned dentist, you can go directly to any DeltaCare USA general dentist. But if you'd prefer to select one in advance or change your current general dentist:

1. Log in to your online account.
2. In the **Your dental facilities** section, choose **Select facility** (or **Change facility** if you already have one).
3. Search by ZIP code, select a facility by entering the six-digit facility ID, or have the system automatically assign the facility closest to your address.
4. Submit your selection.

Please choose how you want to select a facility

Search for a facility by ZIP code

Enter ZIP code

Ex. 94587 or 94587-0867

Select a facility by entering the facility ID

Enter 6-digit facility ID

Ex. 123456

Automatically assign a facility based on where you live

 DELTA DENTAL®

# Delta Dental PPO™



# We've got you covered

Delta Dental PPO



- Visit a PPO dentist to save the most.
- You can visit any licensed dentist.
- You won't be charged more than your expected share of the bill.

# We've got you covered

Delta Dental PPO



- You don't need an ID card to check in.
- We'll coordinate dual coverage.
- Create an online account to check your benefits and claims online.

# We've got you covered

## Delta Dental PPO

	PPO Dentists	Non-PPO Dentists
Reimbursement	PPO Fee	Premier Fee or 80 <sup>th</sup> percentile
Annual Maximum	\$1,700	\$1,700
Diagnostic & Preventive Services	100% (not applied to Annual maximum)	100% (not applied to Annual maximum)
Basic Restorative Services	100%	90%
Endodontics	100%	90%
Periodontics	90%	90%
Oral Surgery	100%	90%
Major Restorative Services	75%	70%
Implants	75%	70%
Orthodontics	50%	50%
Orthodontic Lifetime Maximum	\$1,700	\$1,700

# Save benefit dollars with D&P Maximum Waiver<sup>®</sup>



Visit your dentist for diagnostic and preventive care without affecting your annual maximum.

Dental treatment	Delta Dental pays	You pay	Maximum remaining
Without D&P Maximum Waiver	\$350	\$0	\$1350
<b>With D&amp;P Maximum Waiver</b>	<b>\$350</b>	<b>\$0</b>	<b>\$1,700</b>

# Pre-treatment estimate

It's easy to plan for dental expenses

1

Ask your dentist for an estimate



2

Dentist sends details to Delta Dental



3

You and your dentist receive a cost estimate



## Emergency coverage

- Visit any licensed dentist worldwide and receive benefits.
- Submit a claim for reimbursement.





# Member perks



# Member perks

Extra features, exceptional outcomes



## Virtual dentistry

Remote consultations  
with a dentist

## Hearing aids and LASIK

Discounts through  
Amplifon and QualSight

## LifePerks

Discounts on products,  
services, memberships  
and more

## Wellness resources

Online articles, recipes,  
videos and more



**Members can learn more at**  
[www1.deltadentalins.com/memberperks](http://www1.deltadentalins.com/memberperks)



 **DELTA DENTAL®**

Web and mobile  
resources

# Check out the website

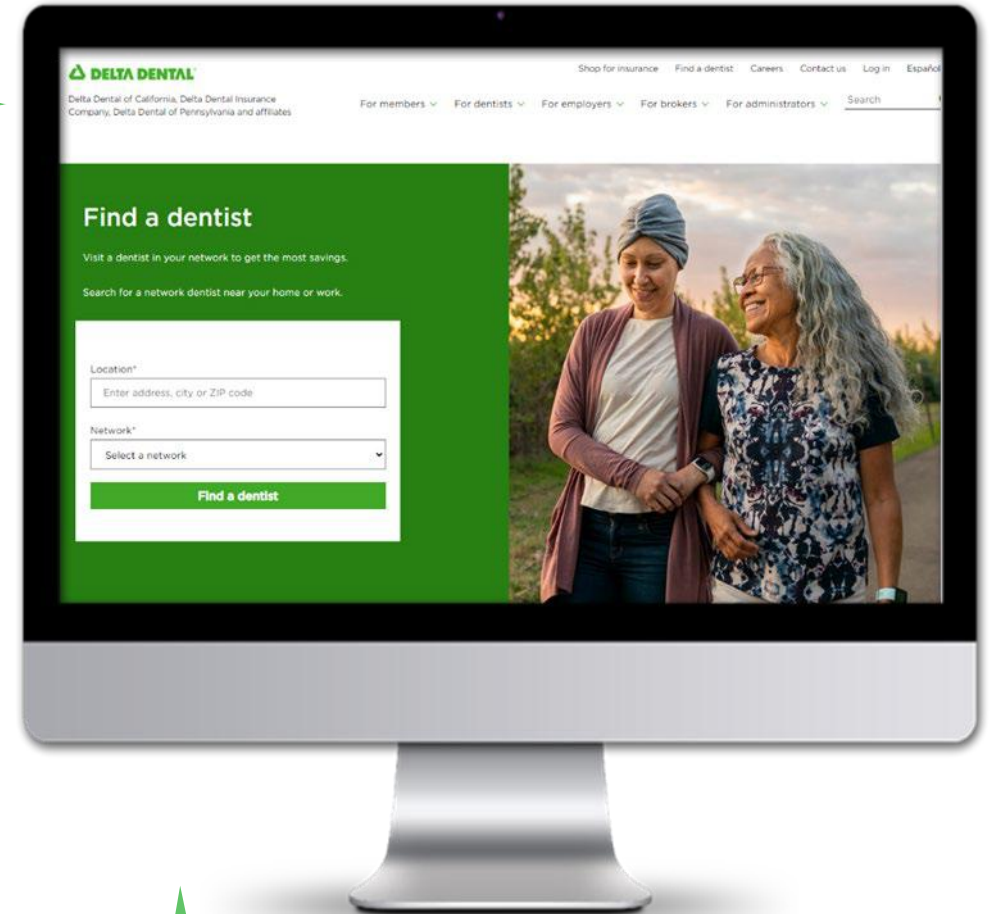
[deltadentalins.com](https://deltadentalins.com)

- Search for a network dentist in your area.
- Get answers to common questions about your dental plan.
- Sign up for your online account
- Read articles, browse recipes and watch videos about oral health and wellness.



# Find a network dentist

- Go to **deltadentalins.com**
- Click on the **Find a Dentist** tab.
- Search by name, address, landmark, city or ZIP code.
- Select your network plan.
- Click **Search**.
- **Narrow your search** by location, specialty, network and language.
- Your search results will include a dentist's Yelp rating, address and phone number.



# Go mobile

Download the app to have all the information you need at your fingertips



## What can you do with the app?

Find a dentist

Electronic ID card

Coverage details

Cost estimator

To find the app, visit the App Store or Google Play and search for “Delta Dental.” Then download the **Delta Dental** app by Delta Dental Plans Association.

 **DELTA DENTAL**<sup>®</sup>

We're here  
for you





# Contact Customer Service

Get help by phone or online

Call us toll-free at **855-244-7323**  
(PPO) and (DHMO)

Speak to a Customer Service representative  
Monday through Friday, 8 am to 8 pm PST  
(PPO) or 5 am to 6 pm PST (DHMO)

For simple questions, use our automated  
phone system, available 24/7

Ask online: Go to [deltadentalins.com](https://deltadentalins.com)  
Contact Us. Then follow the prompts or fill out  
the Customer Service Form.



Thank you!

We're pleased to take your questions.